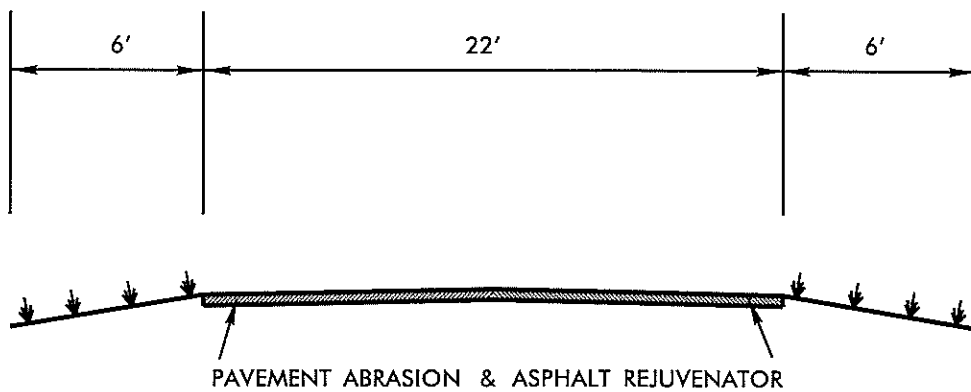


TYPICAL FOR MAPS 1-4

ALL LOCATIONS ON INTERSTATE 40

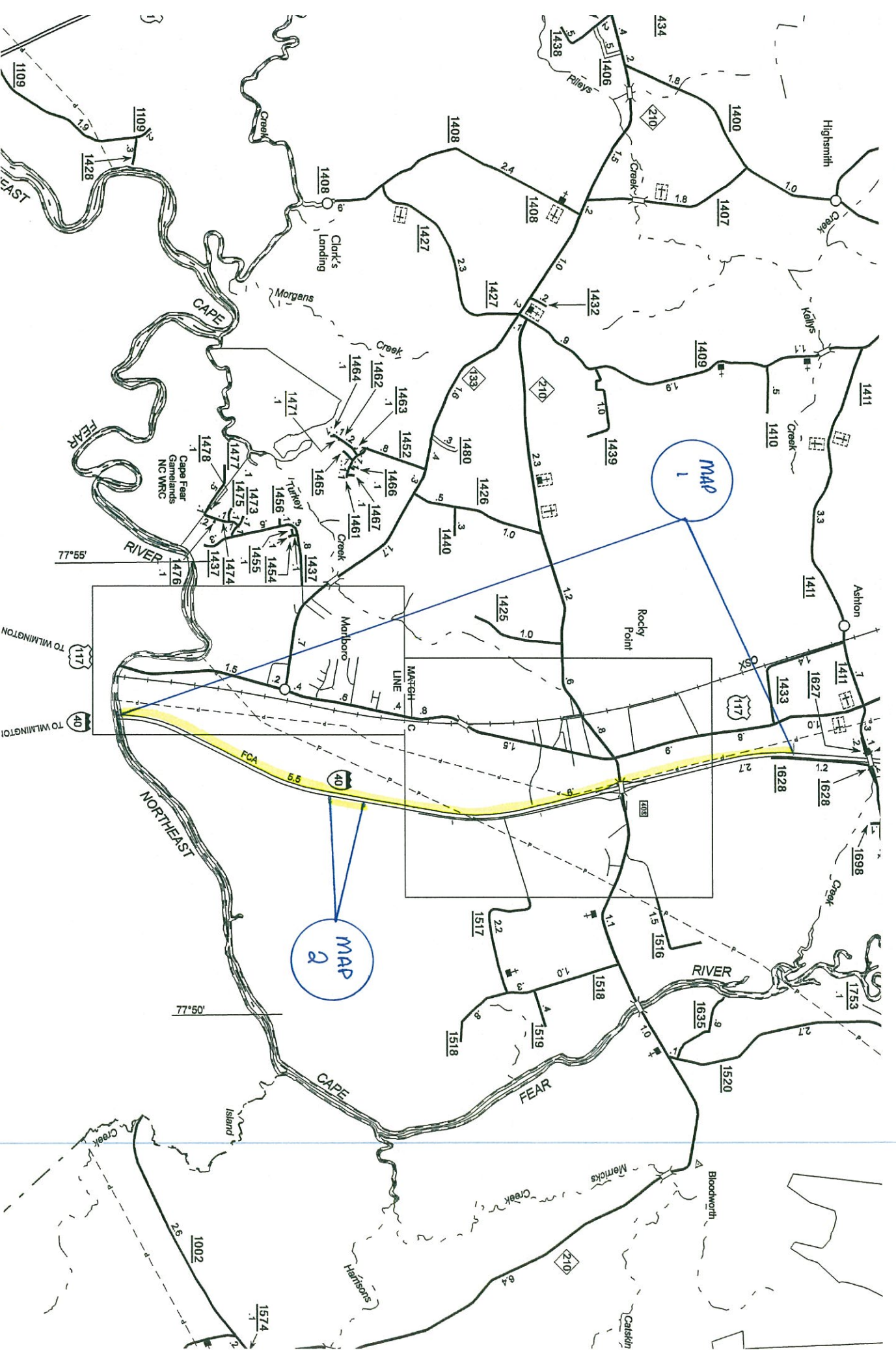


TYPICAL FOR MAP 5

NC 903 FROM US 117 TO I-40

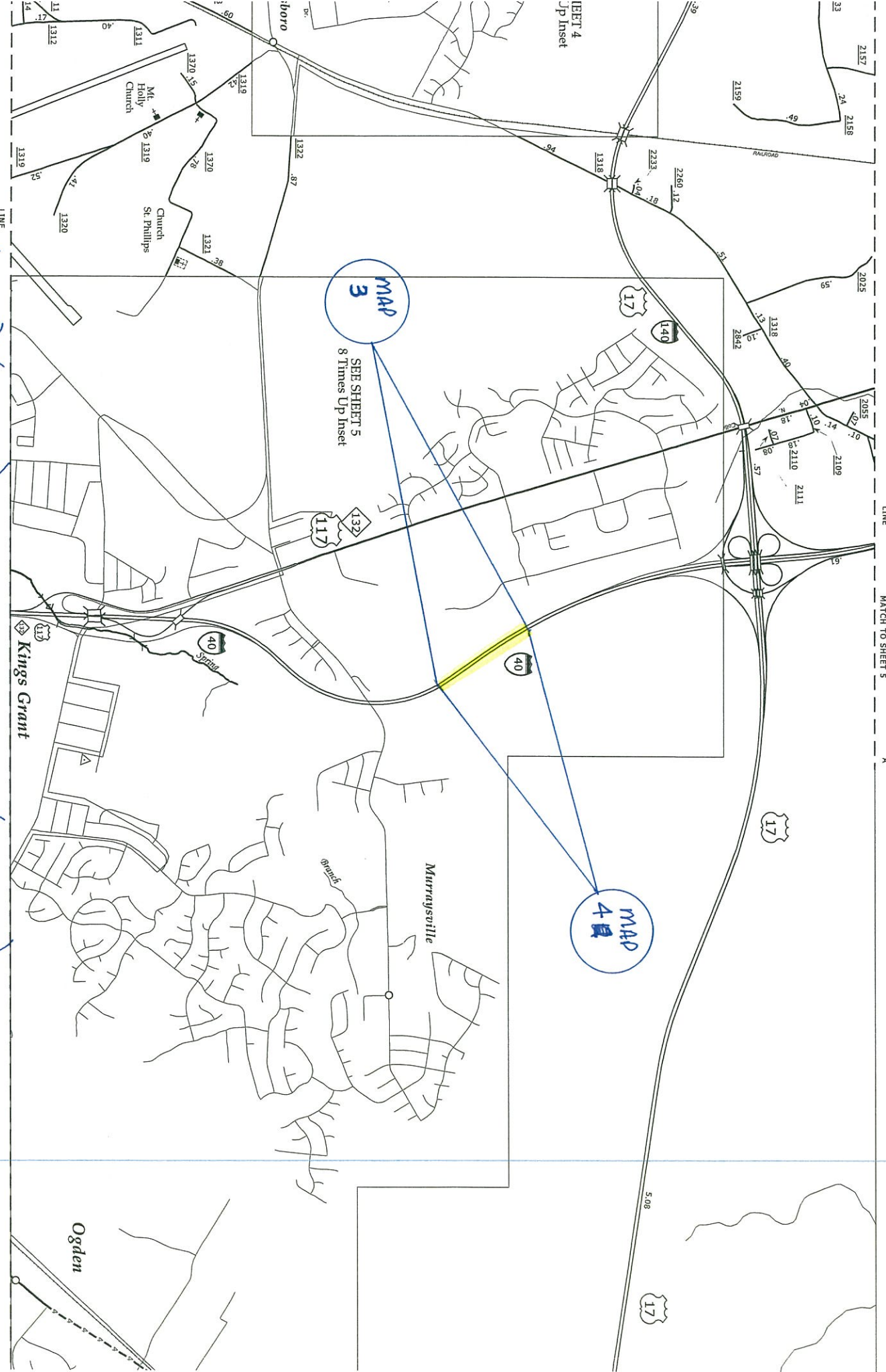
NOT TO SCALE

PENDER COUNTY I-40 E.B.L. (MAP #1) MP 406.00 TO MP 413.456



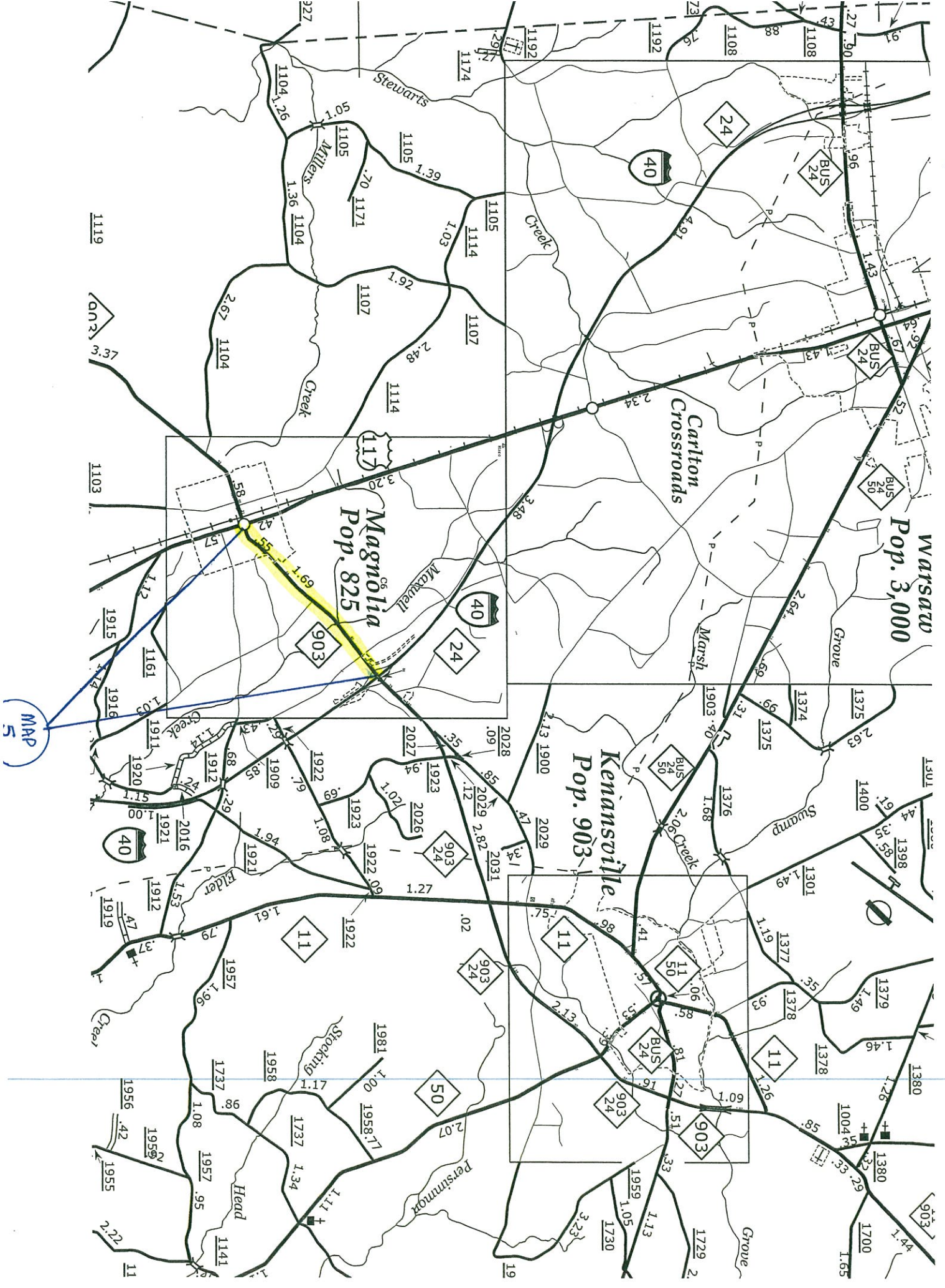
PENDER COUNTY I-40 W.B.L. (MAP #2) MP 411.36 TO MP 411.00

NEW HANOVER COUNTY E.B.L. (MAP #3) MP 417.73 TO MP 418.37 (0.64 MILE)



NEW HANOVER COUNTY (W.B.L.) (MAP #4) MP 418.45 TO MP 417.73 (0.720 MILE)

Durham County NC 903 from US 117 to I-40 (2.25 miles) 22' wide



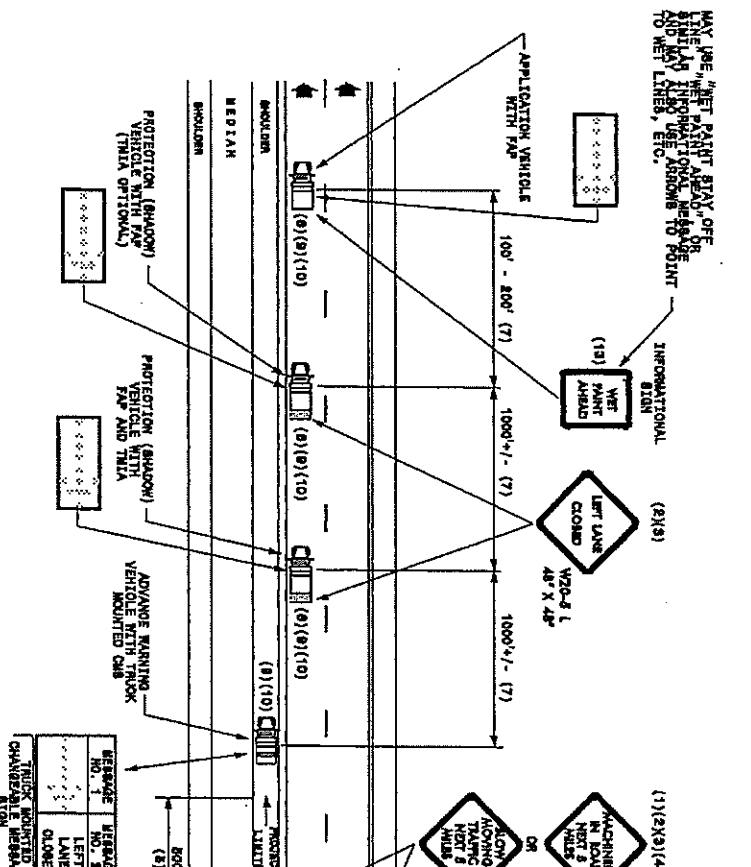
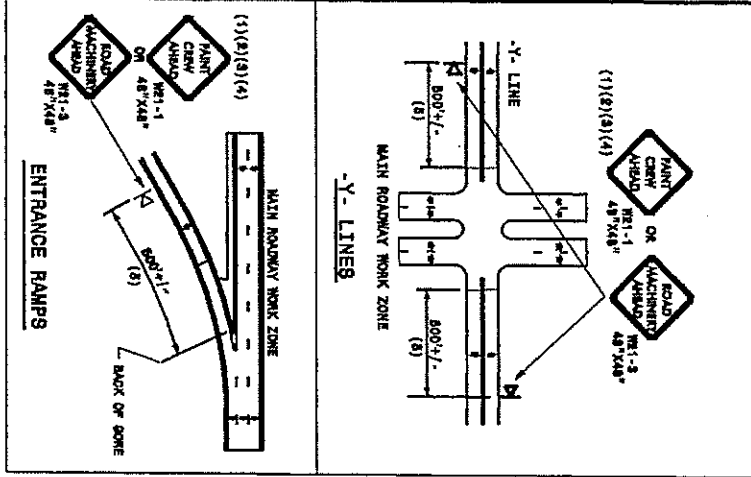
GENERAL NOTES

- (1) THE FOLLOWING OPTIONS MAY BE USED FOR ADVANCE WARNING SIGNS:
 - A. TRUCK MOUNTED MESSAGE SIGN (TMM)
 - B. TRUCK MOUNTED CHANGEBLANK MESSAGE SIGN (CMB)
 - C. MOUNTED MOUNTED ADVANCE WARNING SIGN
 - D. MOUNTED MOUNTED CHANGEBLANK MESSAGE SIGN (CMB)
 - (MUST USE TABLE TO PICK UP SIGN)
- (2) ALL ADVANCE WARNING SIGNS MUST BE 48" X 48" WITH THE FOLLOWING INFORMATION:
 - A. SIGN MUST BE MOUNTED ON A MINIMUM OF ONE (1) FOOT FROM THE GROUND AND SHOULD NOT BLOCK THE MOTORIST'S SIGHT OF THE FLASHING ARROW PANEL AND/OR LIGHTS.
 - (4) MOUNTED MOUNTED ADVANCE WARNING SIGNS SHOULD BE MOUNTED A MINIMUM OF FIVE (5) FEET FROM THE GROUND TO BOTTOM OF SIGN.
 - (5) SIGN SPACING SHOULD BE ADJUSTED FOR HORIZONTAL AND VERTICAL CURVES, ETC. TO IMPROVE SIGHT DISTANCES.

- (6) ADDITIONAL VEHICLES SHOULD BE USED IN WORK CARAVAN TO FACILITATE TRAFFIC FLOW. THE FIRST VEHICLE SHOULD BE A TRUCK MOUNTED MESSAGE SIGN (TMM) OR TRUCK MOUNTED CHANGEBLANK MESSAGE SIGN (CMB). THE FIRST VEHICLE SHOULD HAVE A TRAIL.
- (7) ADJUST DISTANCE AS NEEDED TO PREVENT MOTORISTS FROM ENTERING SPACE BETWEEN THE APPLICATION AND PROTECTION VEHICLE. DISTANCE CAN BE LENGTHENED TO ACCOMMODATE SIGHT DISTANCE NEEDS.
- (8) ROUND UP MILEAGE TO NEXT WHOLE MILE. WORK ZONE SHOULD NOT EXCEED FIVE (5) MILES IN LENGTH.
- (9) RADIO COMMUNICATION BETWEEN VEHICLES IS REQUIRED.
- (10) USE OF A LIGHT BAR ON ALL VEHICLES IS PREFERRED, BUT A ROTATING BEACON MAY BE USED INSTEAD.
- (11) IF WORK IS PERFORMED AT NIGHT, THE WORK AREA MUST BE ILLUMINATED WITH MACHINE AND/OR TOWER LIGHTS AS APPROVED BY THE ENGINEER.
- (12) ALL TRAFFIC CONTROL DEVICES WILL BE CONSIDERED INCIDENTAL TO THE PAY ITEMS FOR PAVEMENT MARKING AND MARKERS.
- (13) INFORMATIONAL SIGNS SHOULD BE ACTIVITY SPECIFIC, 14" X 14" SIGN SIZE SHOULD BE BASED ON THE MOTORIST'S ABILITY TO RECOGNIZE SIGN WHEN TRAVELING FIVE (5) MILES ABOVE POSTED SPEED LIMIT.

LEGEND

- PORTABLE SIGN - SIGN MUST BE HOISTED AND HOIST APPROVED.
- DIRECTION OF TRAFFIC FLOW
- APPLICATION VEHICLE WITH LIGHT BAR
- PROTECTION VEHICLE WITH TRUCK MOUNTED MESSAGE SIGN (TMM) OR TRUCK MOUNTED CHANGEBLANK MESSAGE SIGN (CMB) WITH LIGHT BAR
- ADVANCE WARNING VEHICLE WITH TRUCK MOUNTED MESSAGE SIGN (TMM) OR TRUCK MOUNTED CHANGEBLANK MESSAGE SIGN (CMB) WITH LIGHT BAR
- FLASHING ARROW PANEL, TYPE "B" (60" X 30" MIN.) APPROXIMATE DIMENSIONS INDICATED
- CHANGEBLANK MESSAGE SIGN



MESSAGE NO. 1	MESSAGE NO. 2
TRUCK MOUNTED MESSAGE SIGN	TRUCK MOUNTED MESSAGE SIGN
TRUCK MOUNTED MESSAGE SIGN	TRUCK MOUNTED MESSAGE SIGN

MESSAGE NO. 1	MESSAGE NO. 2
PAINT CREW IN	NEXT
LT LANE	5 MILES
CHANGEBLANK MESSAGE SIGN	

MOVING OPERATION CARAVAN
(OPERATIONS TRAVELING 3 MPH OR FASTER)
PLACING PAVEMENT MARKING OR MARKERS
ON INTERSTATE ROADWAYS

DRAWING NUMBER 8
REVISION DATE: 11/03/04